

# SERVICE EXCHANGE program

## Reliability and Cost Saving



## HYDRAULIC PUMP

## REPAIR AND RETURN

### FIXED PRICE

COST EFFECTIVE  
SOLUTIONS  
FOR YOUR EQUIPMENT

#1 Full set of rotary group

#2 New seal kit or

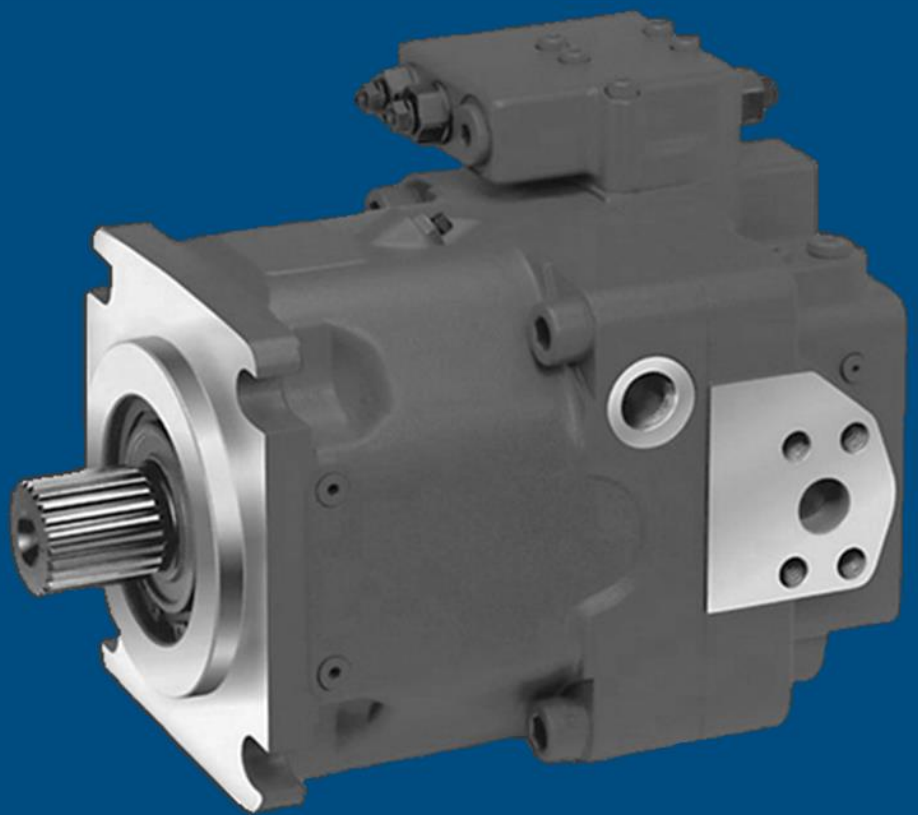
Charge pump

(depending on the model)

#3 New Control Unit

Program applies for the following models only:

A11VLO145  
A11V060  
A8V0107  
A11V095  
A11VLO190  
A4VG250



up to **40 %** cost saving  
and extra warranty



Contact Us for more information:

BAUER Equipment (Malaysia) Sdn Bhd  
Kuala Lumpur  
Customer Service Sales

Brandon Ong  
tel. +6012 728 8095  
ChennKit.Ong@bauerfe.com

BAUER Technologies Far East Pte. Ltd  
Singapore  
Customer Service Sales

Yeo Kee Peng  
tel. +65 8812 5026  
KeePeng.Yeo@bauerfe.com

BAUER Technologies Taiwan Ltd  
Taiwan  
Customer Service Sales

Nicolas Peignot  
tel. +60 12 516 7215  
Nicolas.peignot@bauerfe.com

# SERVICE EXCHANGE program

## Reliability and Cost Saving



As a part of our continuous strive to improve our product and services we introduce the new program in which old or partly damaged components will be remanufactured and put back into use. The BAUER reman components offer like-new-performance for a fraction of the cost of new.

## ADVANTAGES OF BUYING A REMAN PART

- ✓ **SAVE MONEY ON REPAIRS**
- ✓ **EXPERIENCE LESS DOWNTIME**
- ✓ **EXTEND PRODUCT LIFE SPAN**
- ✓ **ENJOY PROLONGED WARRANTY**
- ✓ **MINIMIZE WASTE**

### LIKE-NEW PERFORMANCE

When the defective unit is returned as intact, it goes through series of inspections. The unit continues through our remanufacturing process, where it is disassembled and subjected to finally tuned procedures.

## 1. RETURNING a defective unit

The general precondition is that the housing and the port plate must be intact.



## 2. REMANUFACTURING a component



## 3. RESTORING a part

After being tested the part is fully functional and can be used. The remanufactured parts are made to fit BAUER equipment.



## 4. RECREATING a product

The unit will perform like new and is given BAUER extra warranty which includes service and labor.



### Contact Us for more information:

BAUER Equipment (Malaysia) Sdn Bhd  
Kuala Lumpur  
Customer Service Sales

Brandon Ong  
tel. +6012 728 8095  
ChennKit.Ong@bauerfe.com

BAUER Technologies Far East Pte. Ltd  
Singapore  
Customer Service Sales

Yeo Kee Peng  
tel. +65 8812 5026  
KeePeng.Yeo@bauerfe.com

BAUER Technologies Taiwan Ltd  
Taiwan  
Customer Service Sales

Nicolas Peignot  
tel. +60 12 516 7215  
Nicolas.peignot@bauerfe.com

